

# How To Make The Billy Meier Wedding Cake UFO

## By Phil Langdon

I first looked into the Meier case in 1994, when I was 24, because you can't miss it in the UFO field since it's advertised as the greatest UFO case there is. I was looking into the Mexican "UFO flap" while at university studying math, at the time, and after looking at Meier's evidence I decided to shelve it because it seemed sincere yet the films, which I bought, looked like UFO models. Then in 2009 I was looking through UFO videos on YouTube and saw videos claiming that the Meier case was re-opened. I looked around the web to see if anyone had debunked the case properly yet and came across the IIG web site and saw that they had actually managed to replicate the "fire ship." I thought it was great that a photo taken by a friend of Meier was debunked but it turned out the case promoter had an answer for everything so I decided to step in and challenge him myself. To my surprise he challenged me to replicate the WCUFO and I said OK because it didn't look that difficult to me and I knew he thought I wouldn't do it. When it came out that I had done a good job every argument was thrown at it to dissuade any comparison with the original and taught me about the real attitude behind the promotion so I later made the other UFO's of the Meier case to make sure and cover the photographs and films that have become so famous since 1976. I hope they make people think twice about the case since it is very easy to recreate even though the claim is that it's impossible. All you need is a nice model, a great location and some fishing line...and a 1972 Olympus 35 ECR rangefinder camera with a 42mm wide-angle lens.

So the reason I did it was because Michael Horn challenged me to do it and I like a challenge, especially when I have time on my hands as I did being unemployed. Had this been during my last job as operations assistant in a property development firm it wouldn't have been possible.

### **PARTS NEEDED:**

- 2 x 17.5" Harcostar Container Lids
- 1 x 6" wide plastic mixing bowl cut to ~2.5" thick from the lip
- 2 x 8" Tin Lids (10:1 width:thickness)
- 2 x 6" Wooden Bowls (cut to 1" thick)
- 2 x 8" Plastic Discs
- 2 x 1" Copper Plumbing Washers
- 2 x 1" Wire Mesh (from sieve)
- 51 x Standard 1cm Eyelets
- 11 x 18mm Brass Curtain Rings
- 45 x 30mm Silver Glass Christmas Ornaments
- 1 x 11" Splatter Screen Rim
- 1 x 6" Flower Pot Tray
- 9 x Shelf Pins
- 16 x Shelf Pin Eyelets
- 1 x Plastic Takeaway Container Lid
- 1 x Small Screw Hook
- 100 x Copper Pin Caps
- A Length of 1/2" thick Light Wood/Chipboard
- UHU Glue
- 5cm Solder Wire cut into 12 small square pieces
- Chrome Spray Paint

# INSTRUCTIONS

## **BASE ASSEMBLY:**

Step 1: Obtain two 17.5" Harcostar Drums Limited Container Lids. One will become the Base and one will be used to make the Upper Lid.



Step 2: Cut out the center of one container lid, just inside the rim, from the underside with a blade.



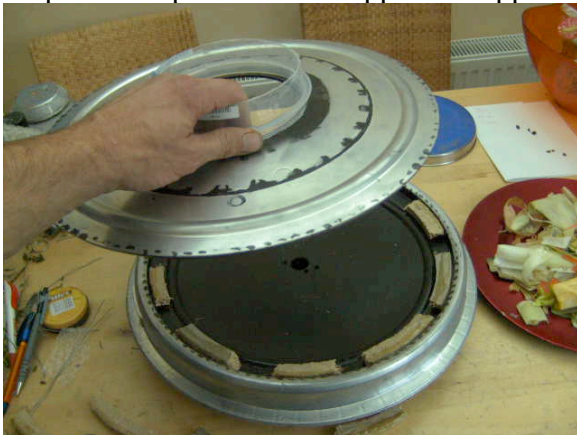
Step 3: Cut out a 5" hole in the center of the cut out and bow the wrong way. This will become the Upper Lid.



Step 4: Cut a plastic bowl to create support for Upper Lid.



Step 5: Glue plastic bowl support to Upper Lid.



Step 6: Drill 2 small holes, 1" apart, in the center of the two 8" Biscuit Tin Lids. One will become the Base Tin Lid and the other will become the Upper Tin Lid.



Step 7: Drill 2 small holes, 1" apart, in the center of the second Harcostar Container Lid. This will become the Base.



Step 8: Pass wire through Base Tin Lid holes through holes in Base.



Step 9: Cut up some 1/2" chipboard/wood to make supports for the Upper Lid.



Step 10: Glue the supports in around the inside of the rim.



Step 11: Place Upper Lid onto supports around rim.



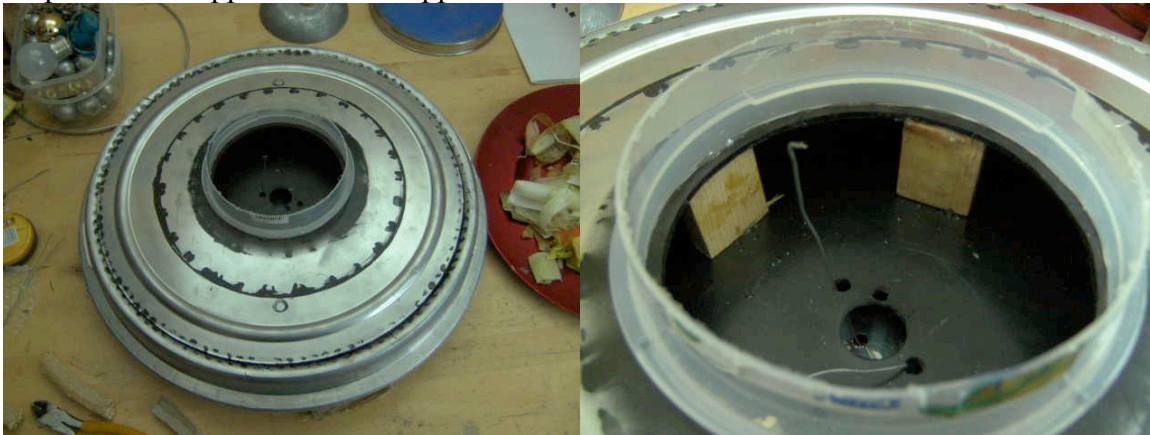
Step 12: Measure the height from the Base up to the Upper Lid and cut 4 wooden supports of that height.



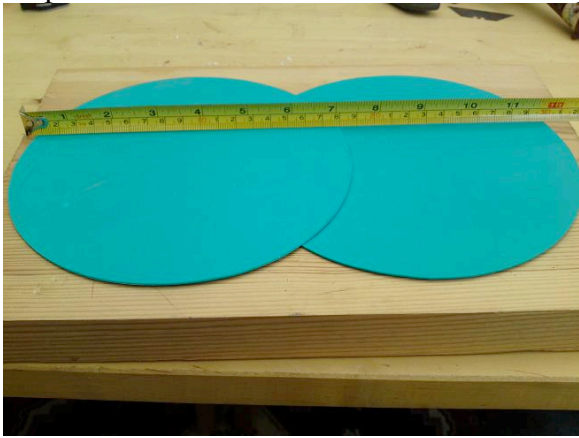
Step 13: Glue the 4 supports in a cross shape just inside the Upper Lid hole.



Step 14: Glue Upper Lid onto supports around rim.



Step 15: Cut out 1" hole in the center of one plastic 8" Plastic Disc and glue onto Base Tin Lid.



Step 16: Take 2 wooden bowls. Place the end of a flexible tape measure (or a piece of string or shoelace) at the center of the bowl. Measure from the center and mark a 3.25" radius along the outside of the bowl and cut off the lip so that the cut bowl is about 6" wide and 1" deep.



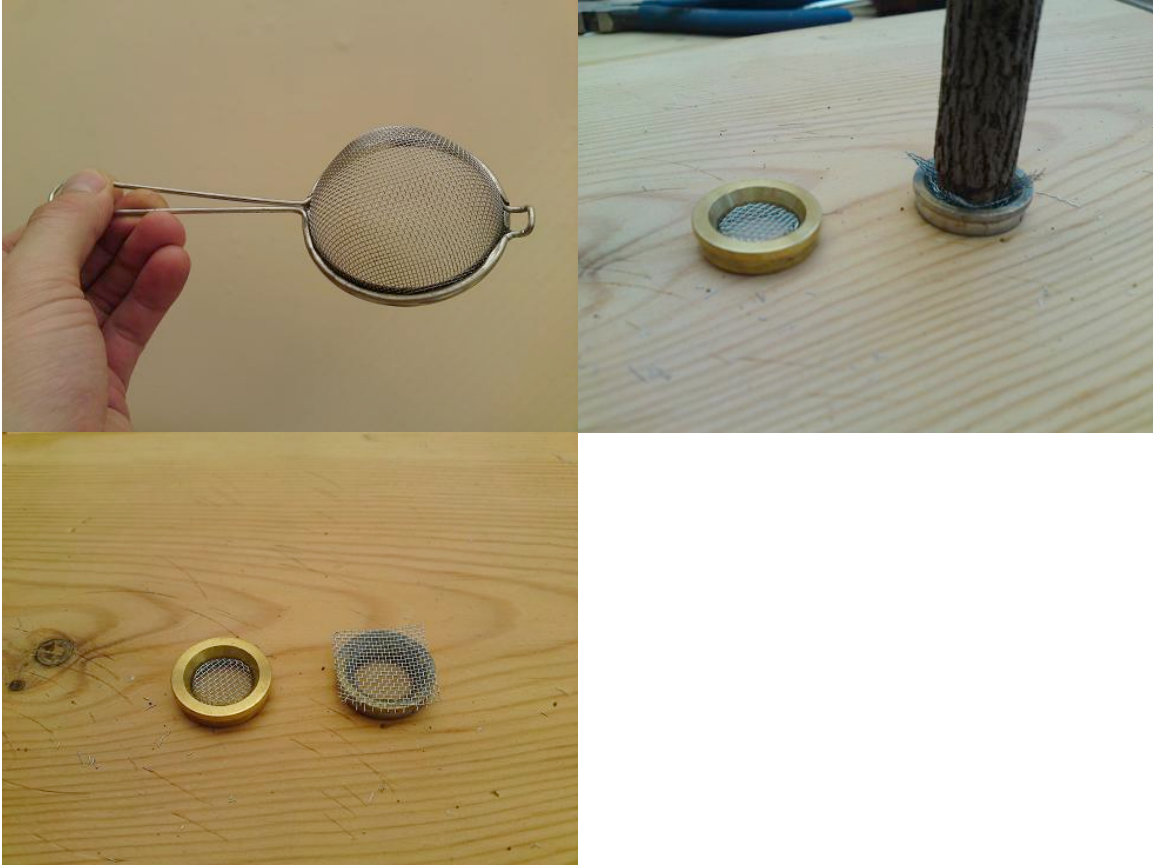
Step 17: Drill a 1" hole in center of wooden bowls.



Step 18: Glue one wooden bowl to underside of Base Tin Lid.



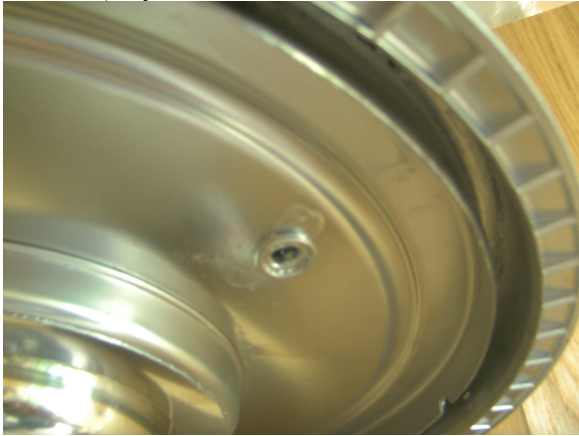
Step 19: Cut 1" wire mesh (from sieve) and mould with large pen, or tube, to fit center of washer and glue into place.





Step 20: Glue copper washer with mesh to center of Bowl on Base Tin Lid.

Step 21: Glue 2 Curtain Rings together and then glue to underside 1" in towards the centre from the groove on the underside of the complete lid at a 45 degree angle towards you from right handle (as you look at it with handles to the right and left)



Step 22: Spray underside with Chrome Spray Paint and leave to dry

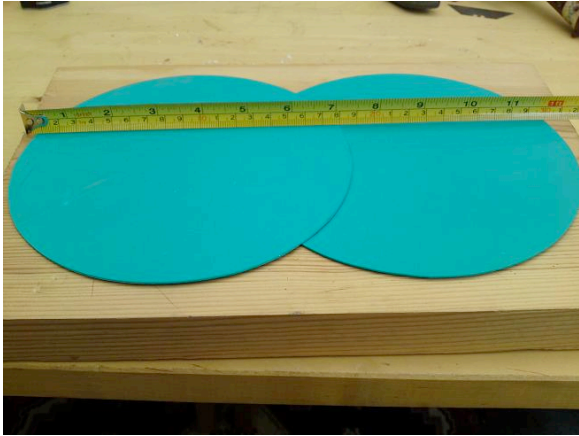


Step 23: Glue 24 eyelets around Base Tin Lid Washer in configuration of 3 x 8 pointed stars



## HULL ASSEMBLY:

Step 24: Cut out 1" hole in the center of the second plastic 8" Plastic Disc and glue onto Upper Tin Lid.



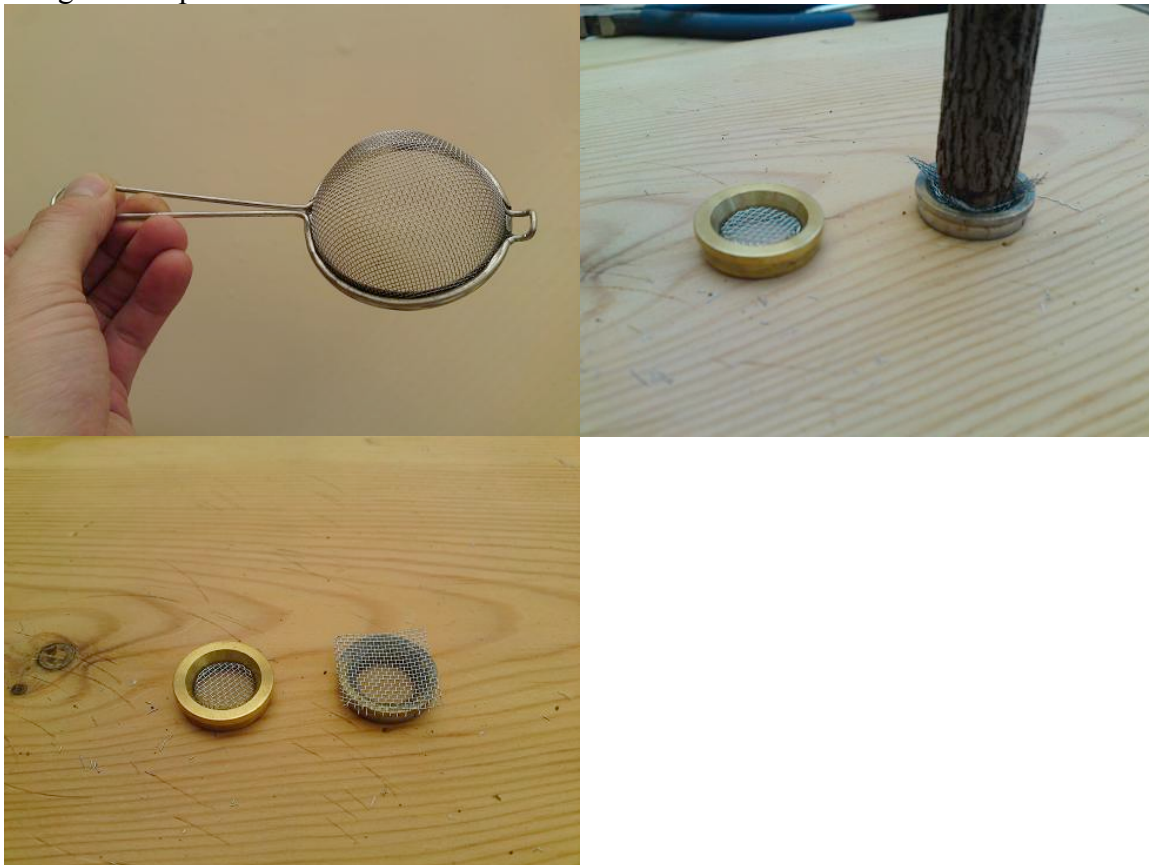
Step 25: Glue Upper Tin Lid over/through twisted wire



Step 26: Glue the second wooden bowl to top of Upper Tin Lid.

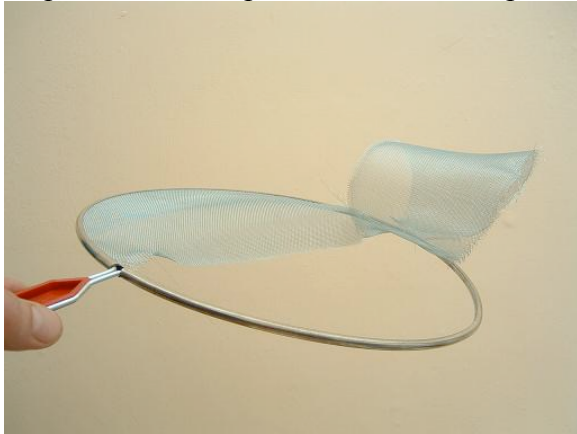


Step 27: Cut 1" wire mesh (from sieve) and mould with large pen, or tube, to fit center of washer and glue into place.



Step 28: Glue copper washer with mesh to center of Bowl on Upper Tin Lid.

Step 29: Remove splatter screen from splatter screen rim. Remove handle from splatter screen.



Step 30: Glue splatter rim onto hull



Step 31: Glue 24 eyelets around Base Tin Lid Washer in configuration of 3 x 8 pointed stars



Step 32: Remove the hanging caps off of the Christmas ornaments.



Step 33: Glue 27 Christmas ornaments around inside ring (leaving a gap between two ornaments which will become the 'gate spheres').



Step 34: Cut twelve small pieces of solder wire to use for Gate Triplets.

Step 35: Glue three pieces of solder wire in front of each of the two Gate Spheres

Step 36: Paint the remaining six pieces of solder wire black and glue them in front of the six pieces of solder wire used in Step 35.

## UPPER DECK ASSEMBLY:

Step 37: If your 6" Flower Pot Tray has a pattern on the outside then you can skip to Step 37. If your 6" Flower Pot Tray does not have a pattern on the outside then glue silver tape around edge of tray. This will become the Upper Disc.





Step 38: Drill 3mm hole into center of Upper Disc.

Step 39: Spray Upper Disc with Chrome Spray Paint and leave to dry.



Step 40: Glue 10 Christmas ornaments onto upper bowl (using Upper Disc as guide and same ornaments to support while glue dries). Leave a 3/4"-1" gap between the two sets of five ornaments. These gaps will become the Upper Gates.



Step 41: Cut the corners off of a square or rectangular plastic take away lid. Measure the height of the Upper Level ornaments to determine length of corner (approx 1" x 1.5").



Step 42: Glue one plastic corner to each of the Upper Gate ornaments.



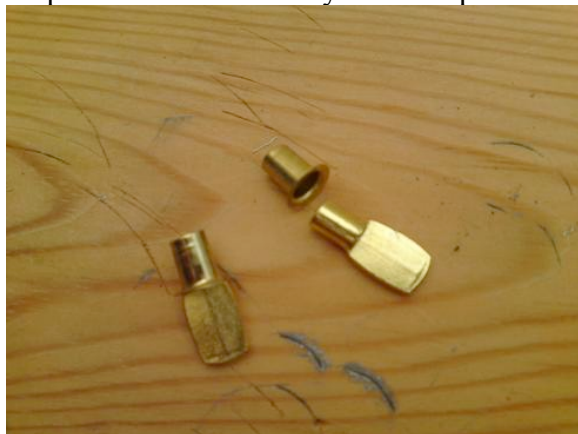
Step 43: Spray Upper body completely with Chrome Spray Paint and leave to dry.



Step 44: Fit Flower Pot Tray (Upper Disc) over wire and secure into place using screw hook.



Step 45: Glue 8 x shelf eyelets and pins to underside rim of Upper Disc



Step 46: Glue 8 remaining shelf eyelets into lower gaps on 'upper deck'

Step 47: Glue 8 shelf pins into shelf eyelets attached to underside of Upper Disc.

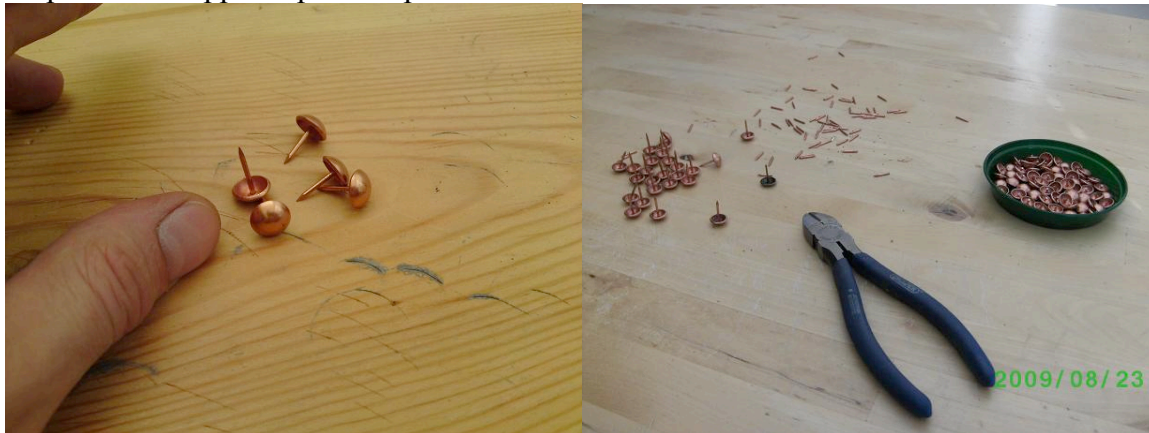
Step 48: Glue 8 Christmas ornaments on top of disc in cross configuration (with hook in the center)



### **FINAL DETAILS:**

Step 49: Cut and shape three small pieces of wood into asymmetric lozenge shape, paint blue and glue into 'gate' position at rim

Step 50: Cut copper caps from pins



Step 51: Glue copper caps around hull rim leaving space for blue 'gate'



Step 52: Glue 2 Curtain Rings together and then glue onto side of 2 Christmas ornaments to make 'gate spheres'.



Step 53: Glue 2 eyelets onto hull opposite each other next to ring in cross configuration with underside curtain rings.

Step 54: Glue 2 sets of double curtain rings at hull gate. One at the gate between the 2 balls and another behind it at the level of the tin lids lip so it appears to be floating.

Step 55: Glue a single shelf pin at the opening of the upper deck and on the other side, where the other opening is, glue a single curtain ring.

# Completed Billy Meier Wedding Cake UFO Model

